



Air distribution for clean rooms. Clever and flexible.



TROX[®] TECHNIK
The art of handling air



*X-CUBE CROFCU
production facility
in Anholt, Germany*

► Air distribution for clean rooms. Clever and flexible. ►►

The X-CUBE CROFCU is a compact ventilation unit that ensures and maintains the essential conditions for all classes of clean rooms. The secondary unit for use with centralised ventilation and air conditioning systems is typically installed in false ceilings. It dissipates high thermal loads and requires only a low fresh air volume flow rate. The primary air system (patent pending) allows for the direct removal of exhaust air while fresh air is supplied to the room.

- Suitable for all clean room concepts
- Suitable for all classes of clean rooms (ISO 14644-1) when combined with particulate filters
- Pumped chilled water cooling system with room temperature control
- Variable recirculated air volume flow rates of up to 6000 m³/h
- Increased flexibility if several units are connected
- Energy-efficient plug fan with EC motor
- Addition of fresh air from 50 m³/h to 2000 m³/h
- Monitoring of filters downstream
- Control of airlocks for people and material
- Contamination check by means of pressure zone control
- Space-saving due to smaller ducts
- Simple and quick commissioning due to plug and play



Panels

- Integral cover profiles
- Compression latches facilitate inspection and cleaning



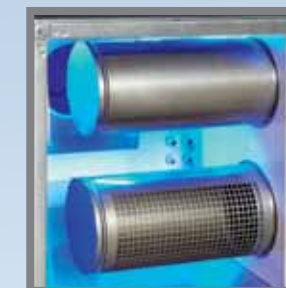
Interior surfaces

- Stainless steel or powder coating for maximum hygiene



Volume flow control

- High control accuracy
- For airflow velocities up to 13 m/s
- Closed blade air leakage class 4 to EN 1751



Primary air system

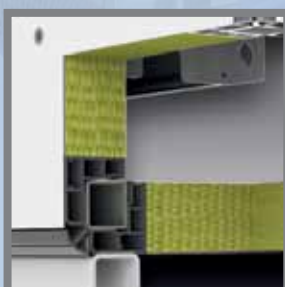
- Optimum addition of primary air
- No mixing with exhaust air

XCUBE CROFCU



Steel frame

- Powder-coated
- Completely covered by panels



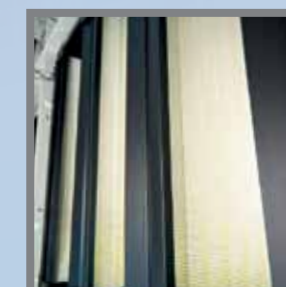
Casing

- Integral acoustic and thermal insulation
- Elimination of thermal bridging due to separation between inner skin and outer skin as well as between supply air and extract air



Centrifugal fan

- EC motor without impeller housing
- High efficiency
- Low sound power level
- Complies with the future efficiency class IE4 according to IEC 60034-30



Optional particulate filter

- Eurovent-certified, energy class A
- Compact depth
- Low initial differential pressure
- High dust holding capacity
- Stainless steel clamping rails



Unparalleled hygiene

With the special shape of the casing, its smooth surfaces, and the way in which the components are installed, the X-CUBE CROFCU complies with the VDI 6022 guideline.

Easy installation

The X-CUBE CROFCU is delivered ready to operate. Transport is easy as holes are provided for the insertion of transportation rods such that the unit can be lifted with a crane. The dimensions fit the usual grid sizes of clean room ceilings. Due to its rigid base the unit can be safely installed in ceilings or set up on the floor.

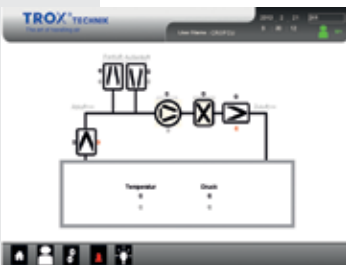


Rapid commissioning

All required parameters are factory set. A factory acceptance test ensures that each unit meets the normative requirements as well as those of the customer. No more wiring is required on site, which allows for rapid and hence cost-saving commissioning.

Safe maintenance

The X-CUBE CROFCU has been designed without any sharp edges and hence ensures maximum safety. All components are easily accessible and easy to maintain.



Flexibility

It is possible to use the X-CUBE CROFCU as a single unit or to combine several units. In conjunction with the TROX software this results in a flexible ventilation solution for clean rooms. The CROFCU allows for stand-alone operation as well as for integration with modern building management systems.

Made in Germany

Thanks to its most advanced manufacturing technology in Germany, TROX can supply excellent quality and meet the most demanding delivery times. Just for the X-CUBE TROX built a dedicated 15,000 m² production facility in Anholt, near the German-Dutch border, which has been equipped with the most advanced manufacturing technology. Almost needless to mention that TROX implements the relevant industry standards and has all its components and processes certified.





TROX[®] TECHNIK

The art of handling air

TROX GmbH

Heinrich-Trox-Platz

47504 Neukirchen-Vluyn, Germany

Phone +49(0)2845 2020

Fax +49(0)2845 202265

E-mail trox@trox.de

www.troxtechnik.com